

# Independence® Series

Independence® and Independence® PV  
Gas-fired Steam or Hot Water Boilers

GAS BOILERS

**STEAM**  
or hot water  
**BOILER**



- Up to 83% efficient
- 62 to 385 MBH in 10 sizes
- Steam boiler
  - Optional water boiler with tankless coil
- Natural or LP gas
- Natural draft or power vented
- Cast iron sectional design

**Burnham®**  
by  
**U.S. Boiler Company**

# Independence® Series

Gas-fired Steam or Hot Water Boilers



## Burnham Independence Series Boilers

Burnham Independence Series gas-fired boilers offer you all the benefits of hydronic heat plus the advantages of high quality, reliable cast iron construction and advanced engineering. Available for steam or hot water applications in either a natural draft or power vent configuration, the Independence is a quiet, reliable, and efficient boiler.

### Independence PV- Power Vented Model (steam only)

Independence PV boilers offer you the flexibility of a power vent system. This boiler can be installed virtually anywhere because no chimney is required for operation. A draft-inducing fan pulls hot gases through the heat exchanger at the correct speed for optimum efficiency. Operating together, the fan and heat exchanger provide more heat with less fuel consumption.



### Quality Construction

Independence boilers are made with cast iron sections that are produced at Burnham Foundry, LLC in Zanesville, Ohio and are assembled and tested at Burnham's facilities in Lancaster, PA. This ensures the quality and availability of this vital component.

The cast iron sections on the heat exchanger are linked by metal couplings called "push nipples". These push nipples increase the longevity of a the boiler by resisting the petroleum based antifreeze commonly used in hydronic heating systems. Many competitive products use a rubber-type gasket for this purpose. This type of gasket will begin to deteriorate when it comes in contact with hydronic antifreeze.

### A Warranty You Can Count On

Each Independence & Independence PV boiler is backed with a 10-year limited warranty on the heat exchanger. In addition, Independence and Independence PV boilers also feature a limited lifetime nipple leakage warranty. An optional Winter Warmth Assurance Plan is also available which covers parts and labor for either 5 or 10 years from the date of installation.

### Independence Advantages

- Stainless steel burners ensure years of reliable, rust-free operation.
- Step-opening gas valve enables boiler to start on low fire and progress to high fire. This provides safe & smooth operation, quiet ignition, and longer component life.
- Industrial quality pressuretrol for accurate, trouble-free control.
- Equipped with fuel-saving vent damper (non-PV models only) which automatically closes the flue and preserves system heat after the burner shuts off. This damper opens automatically prior to burner ignition.
- Rear drafthood (non-PV models only) installs in low overhead areas and allows for clearance and flexibility of installation with existing piping.



Rear drafthood (non-PV models only) installs in low overhead areas and allows for clearance and flexibility for installing with existing piping

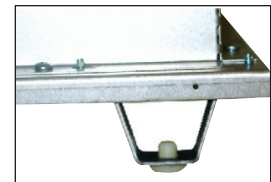
Cast iron nipples provide reliable connection between heat exchanger sections



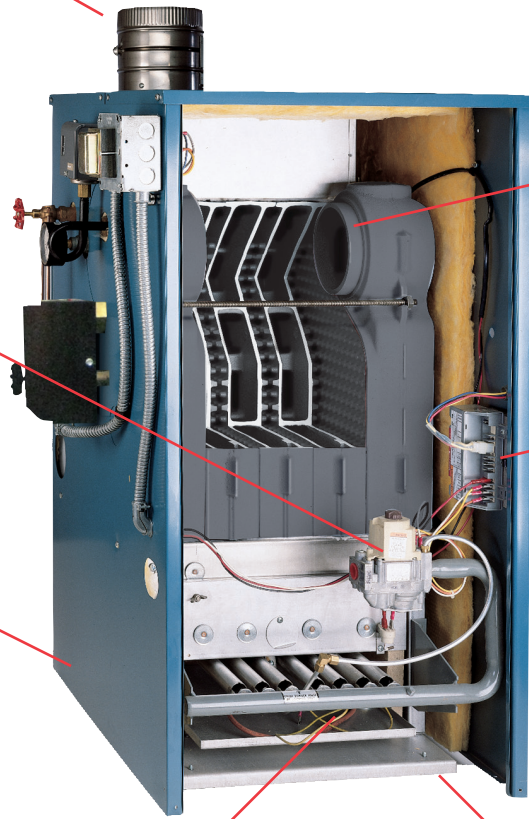
Step opening gas valve provides smooth & quiet start-up. Can also be equipped with optional electronic ignition.

All controls located safely inside the boiler jacket, protecting them from damage and tampering

Superior base and jacket design helps keep surface temperatures cooler



GAS BOILERS



Stainless steel burners help ensure long-term reliability and high efficiency operation

High strength trapezoidal legs with nylon glides make moving boilers easy and protect against potential damage to floors.



## Burnham Alliance SL™ Indirect-fired Water Heaters

Independence and Independence PV boilers feature 1-1/4" tapings below the waterline for the addition of hydronic zones and/or indirect water heaters. For an abundant supply of hot water, a Burnham Alliance SL is the perfect compliment for your Independence boiler.



Alliance SL water heaters are designed with an effective hydrastone lining that offers superior corrosion resistance and outstanding performance in a wide variety of water conditions.

Water heaters are available in five sizes and come with a unique 10/2/1 warranty – 10 years on the tank and coil, 2 years labor and 1 year on parts. An optional lifetime warranty is also available.



# Independence Ratings & Specifications\*



Boiler Number	Input MBH (1)	DOE Heating Capacity	I=B=R Rating (2)			AFUE				Approx Shipping Weight (Lbs.)	Minimum Chimney Requirements (Round) Dia. (In.) x Ht. (Ft.) (4) (5)
			Water MBH	Steam MBH	Steam Sq. Ft.	24V		EI			
						Water	Steam	Water	Steam		
IN3	62	51	44	38	158	81.0	80.0	83.1	81.9	350	4x15
IN4	105	87	76	65	271	81.3	80.0	83.1	82.0	420	5x15
IN5	140	115	100	86	358	81.6	80.3	83.1	82.0	485	6x15
IN6	175	144	125	108	450	81.8	80.6	83.2	82.1	555	6x15(5)
IN7	210	173	150	130	542	82.1	80.9	83.2	82.1	620	7x15
IN8	245	202	176	152	633	81.1	80.0	83.2	82.2	690	7x15(5)
IN9	280	231	201	174	725	81.4	80.3	83.2	82.2	760	8x15
		Gross Output MBH				Combustion Efficiency (%)					
						Water	Steam				
IN10(3)	315	260	226	195	812	83.5		82.5		815	8 x15(5)
IN11(3)	349	288	250	216	900	83.5		82.5		885	9x15
IN12	385	318	276	239	996	83.5		82.5		815	9x15

\*LP available on IN3-IN9

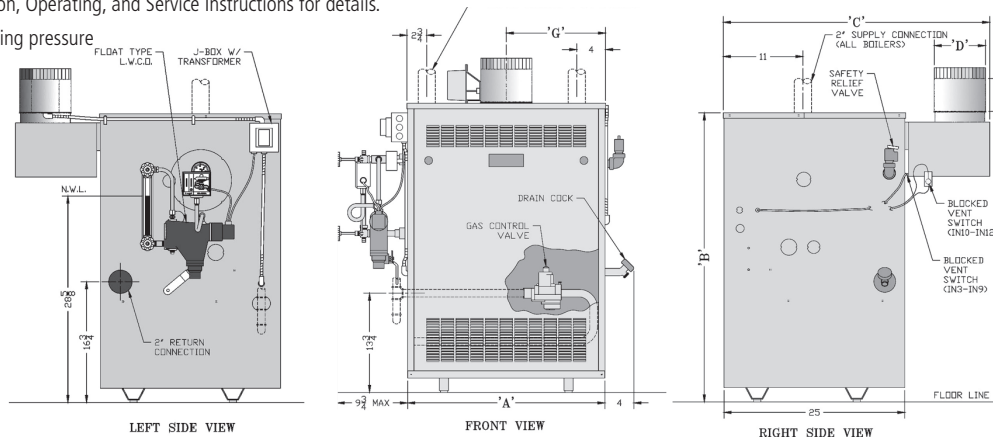
1. Ratings shown are for installations at sea level and elevations up to 2,000 ft. For higher elevations, reduce ratings 4% for each 1,000 ft. above sea level
  2. Capacities, outputs, and ratings are based on steam combustion efficiency of 82.5%. Water combustion efficiency is 83.5%.
  3. For Canadian builds only: reduce input and output by 3%
  4. 15 ft. height is measured from top of drafthood to top of chimney.
  5. IN6, IN8, & IN10 – Canada only: Increase chimney diameter by 1"
- Working Pressure: 15 PSI Steam; 30 PSI water

## Independence PV Ratings & Specifications Natural Gas, Packaged, Steam Only

Boiler Number	Input MBH	DOE Heating Capacity MBH (1)	I=B=R Net Ratings		Maximum Vent Length Equivalent Ft. (2) (3)	AFUE%	Approx Shipping Weight (LBS.)
			Steam MBH	Steam Sq. Ft.			
PIN3PV	62	52	39	163	45	83.2	355
PIN4PV	105	87	65	271	35	82.2	425
PIN5PV	140	116	87	363	35	82.2	490
PIN6PV	175	145	109	454	35	82.2	560

1. Capacities and ratings are based on steam combustion efficiency of 83.0%. (84.1% for PIN3PV)
2. The approved venting system for the Independence PV is 3" AL29-4C® stainless steel. Do not substitute other materials.
3. Vent pipe length is listed in equivalent feet. Any elbows or tees used can have specific values which must be subtracted from the total length to determine maximum length of straight pipe. Consult Installation, Operating, and Service Instructions for details.

Steam only – 15 PSI working pressure



## Dimensions

Boiler Model	A	B	C	D	E	F	G
IN3	14-1/2	40	33-3/4	4	40-1/4	4-3/4	7-1/4
IN4	17-3/4	40	34-3/4	5	40-1/4	4-3/4	8-7/8
IN5	21	40	35-3/4	6	40-1/4	5-1/4	10-1/2
IN6	24-1/4	40	35-3/4	6*	40-1/4	5-1/4*	12-1/8*
IN7	27-1/2	40	36-3/4	7	40-1/4	7-1/2	13-3/4
IN8	30-3/4	40	36-3/4	7*	40-1/4	7-1/2*	15-3/8*
IN9	34	40	37-3/4	8	40-1/4	7-1/2	17
IN10	37-1/4	45	38-3/4	8*	45-1/2	7-1/2	18-5/8
IN11	40-1/2	45	38-3/4	9	45-1/2	7-1/2	20-1/4
IN12	43-3/4	45	38-3/4	9	45-1/2	7-1/2	21-7/8
PIN3PV	14-1/2	45	N/A	3	N/A	N/A	4
PIN4PV	17-3/4	45	N/A	3	N/A	N/A	8-1/4
PIN5PV	21	45	N/A	3	N/A	N/A	9-1/4
PIN6PV	24-1/4	45	N/A	3	N/A	N/A	9-1/4

\*Dimensions indicated are for USA only – For Canada, use dimension on next larger model.



[www.usboiler.burnham.com](http://www.usboiler.burnham.com)

© 2011 U.S. Boiler Company, Inc. - Lancaster, PA  
Phone: 1-888-432-8887